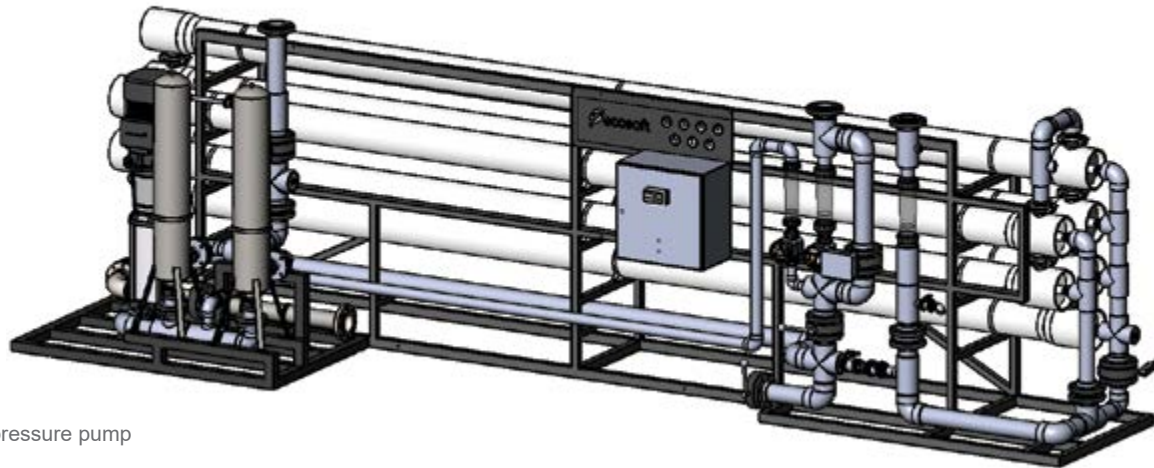


# VOMO-36

## INDUSTRIAL REVERSE OSMOSIS SYSTEM

### APPLICATIONS

Process water, rinse water, steam boilers, heating and cooling circuits, agriculture, desalination, food and beverage, utility water treatment.



### EQUIPMENT

- Grundfos® CR 45-6-2 high pressure pump
- 300 psi membrane vessels
- DOW Filmtec™ XLE-440 membrane
- Stainless steel housing with 7 PP 2,5 × 40" filters
- Electrical cabinet with Ecosoft controller
- Motorized butterfly valves
- Diaphragm regulating valves
- Piping, valves, instrumentation, frame

*Shown with optional chemical dosing pumps and stage shutoff valves.  
System design may be amended on manufacturer's discretion without  
violating compliance with the process flow diagram*

### OPTIONS

- High rejection Filmtec™ membranes
- Dosing pump for antiscalant or other RO chemicals
- Permeate inlet for permeate membrane rinse
- Raw water mixing line

### CONNECTION PORT SIZES

Influent water	DN100 (flange)
Permeate	DN80 (flange)
Concentrate	DN100 (flange)
CIP inlet	DN80 (flange)
CIP return	DN80 (flange)
Approximate weight (dry)	2200 kg
Approximate dimensions (Width × Depth × Height) <i>Dimensions may vary ± 5%</i>	7.0 × 2.4 × 2.5 m

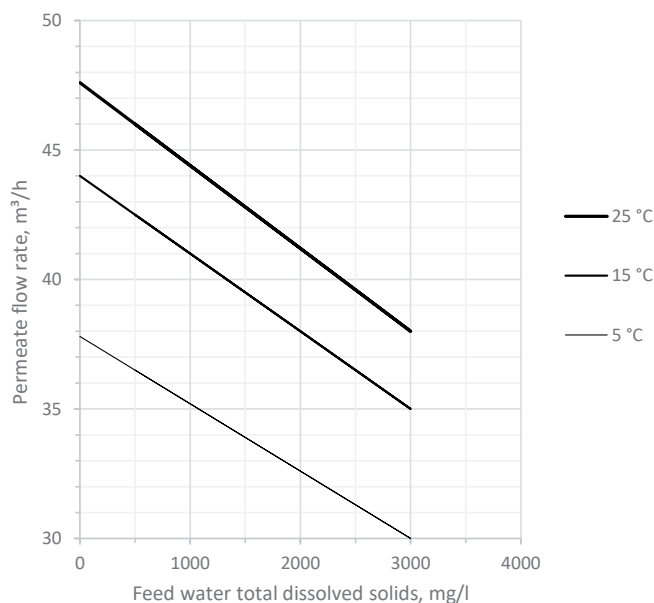
## TECHNICAL SPECIFICATIONS

Permeate capacity <sup>1</sup>	36 m³/h
Permeate recovery <sup>2</sup>	75%
Maximum TDS	3000 mg/l
Influent flow demand	50...60 m³/h
Operating pressure	8...12 bar
Maximum pressure	14 bar
Electrical requirements	400 V, 50 Hz (3 ph)
Electrical power	22 kW
Prefilter rating	5 µm

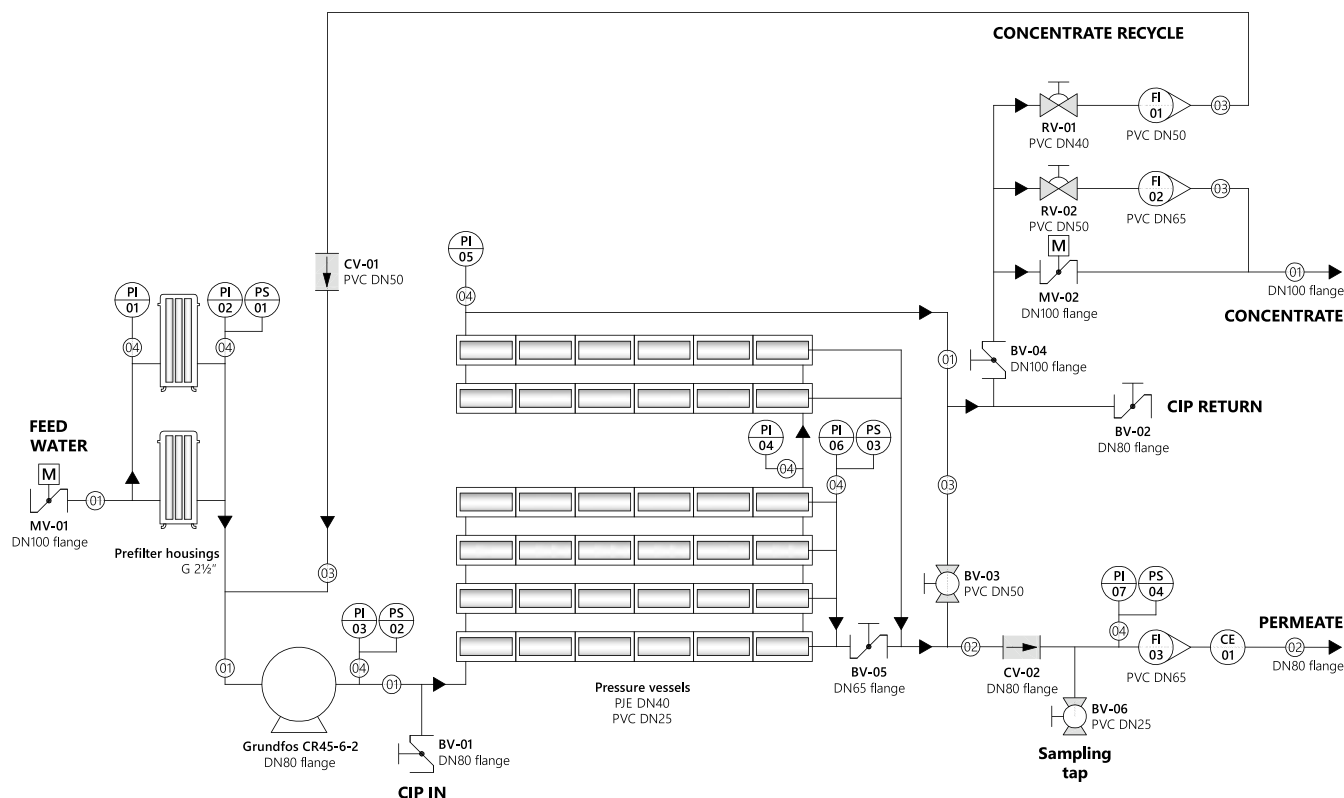
<sup>1</sup> depends on feed water TDS, temperature, and permeate recovery — see graph on the right

<sup>2</sup> for low scaling/fouling water

## ECOSOFT MO-36 RO FLOW CAPACITY GRAPH



## PIPES AND INSTRUMENTS DIAGRAM



### PIPE SPECIFICATIONS

01	PVC pipe	110 mm O.D.
02	PVC pipe	90 mm O.D.
03	PVC pipe	63 mm O.D.
04	LLDPE hose	1/4" O.D.

### VALVE AND INSTRUMENT SPECIFICATIONS

 Motorized butterfly valve	 Diaphragm valve	 Ball valve	 Pressure gauge (panel mount)	 Rotameter
 Butterfly valve	 Check valve		 Pressure switch (panel mount)	 Conductivity probe (process mount)